

B AC Motors

2 Pole Motor 90W(□ 90mm)

90W 2 Pole Motor 90W(□ 90mm)

Motor Specification

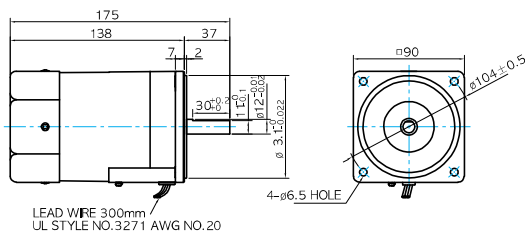
Model		Output W	Voltage V	Frequency Hz	Poles	Duty	Starting Torque		Rated Load			Capacitor μF / VAC	
Lead Wire Type	Terminal Box Type						kgfcm	N.m	Speed r/min	Current A	Torque kgfcm N.m		
9IDD1(A)-90F-A	9IDD1(A)-90F-AT	90	1 φ 110	60	2	Cont.	2.23	0.223	3200	1.98	2.74	0.274	20.0 / 250
9IDD2(D)-90F-A	9IDD2(D)-90F-AT	90	1 φ 220	60	2	Cont.	2.74	0.274	3200	1.09	2.74	0.274	6.0 / 450
9IDDE-90F-A	9IDDE-90F-AT	90	1 φ 220	50	2	Cont.	2.92	0.292	2700	0.82	3.25	0.325	6.0 / 450
9IDD3(G)-90F-A	9IDD3(G)-90F-AT	90	3 φ 220	50	2	Cont.	11.00	1.100	2750	0.55	3.19	0.319	-
				60			8.00	0.800	3250	0.54	2.70	0.270	
				50			12.00	1.200	2750	0.60	3.19	0.319	
9IDD4(K)-90F-A	9IDD4(K)-90F-AT	90	3 φ 230	50	2	Cont.	9.00	0.900	3250	0.56	2.70	0.270	-
				60			10.44	1.044	2700	0.34	3.25	0.325	
				60			8.06	0.806	3200	0.33	2.74	0.274	
9IDD5(L)-90F-A	9IDD5(L)-90F-AT	90	3 φ 380	50	2	Cont.	11.41	1.141	2700	0.36	3.25	0.325	-
				60			8.90	0.890	3200	0.34	2.74	0.274	
				60			10.16	1.016	2700	0.34	3.25	0.325	
9IDD5(L)-90F-A	9IDD5(L)-90F-AT	90	3 φ 400	50	2	Cont.	7.81	0.781	3200	0.32	2.74	0.274	-
				60			11.24	1.124	2700	0.36	3.25	0.325	
				60			8.66	0.866	3200	0.34	2.74	0.274	

1) Enter the phase & voltage code in the place * within the motor model name. 2) The phase & voltage code A, D, E, G, K, L contain a built-in thermal protector.
 * It is not possible to use an inverter for three phase 380~440V motor. When the inverter is used, the insulation of winding coil becomes hot and may cause damage to the motor.

Dimensions

LEAD WIRE TYPE

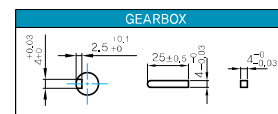
MOTOR MODEL: 9IDD□-90F-A (GENERAL FAN)



MOTOR OUTPUT SHAFT

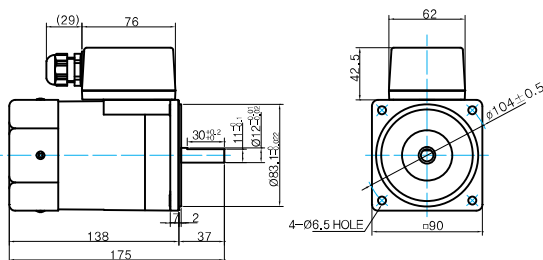
MODEL	SPEC
D-CUT TYPE	
KEY TYPE	

KEY SPEC



TERMINAL BOX TYPE

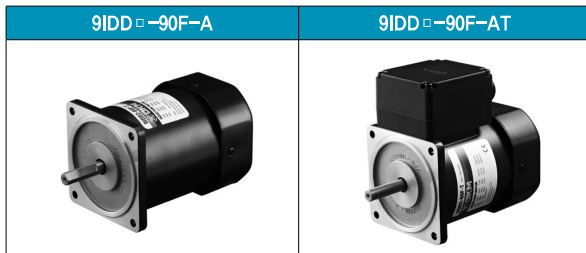
MOTOR MODEL: 9IDD□-90F-AT (GENERAL FAN)



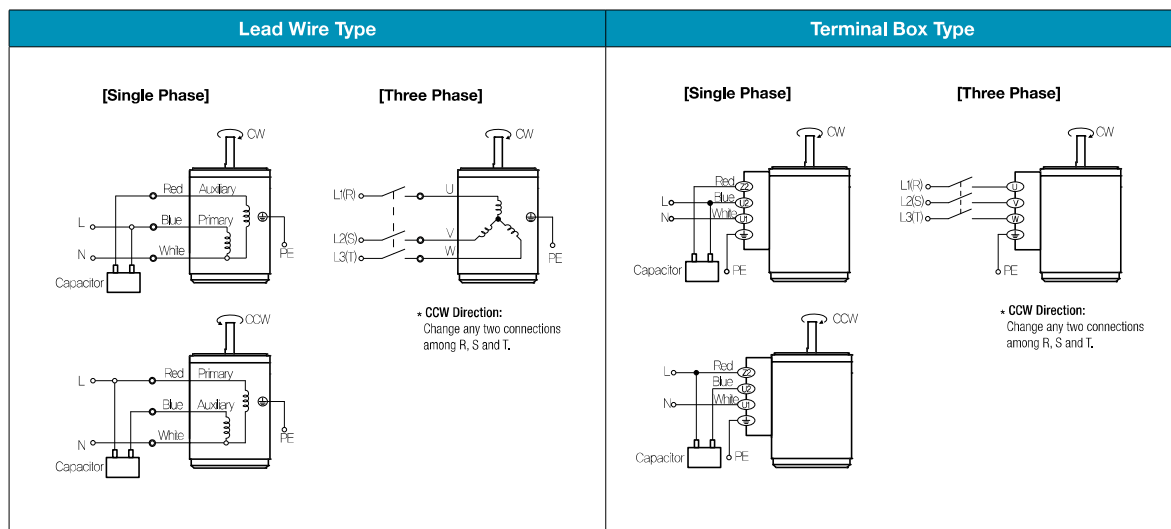
WEIGHT

PART	WEIGHT(Kg)
MOTOR	3.05

Motor Images



Connection Diagrams



1) The direction of motor rotation is as viewed from the shaft end of the motor.

2) CW represents the clockwise direction, while CCW represents the counterclockwise direction.

3) Change the direction of single phase motor rotation only after bringing the motor to a stop. If an attempt is made to change the direction of rotation while the motor is rotating, the motor may ignore the reversing command or change its direction after some delay.